

CHC2D 1920s and 1930s

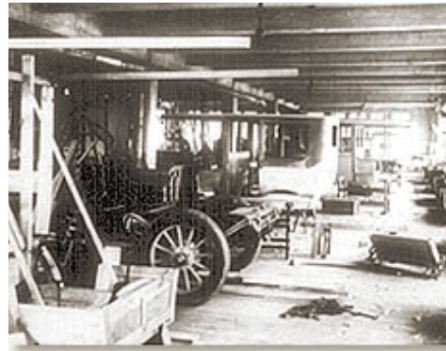
2-2 The Automobile and Economic Boom

The Automobile

- 1900-1920- Automobile existed but wasn't very common
- Expensive- \$825 in 1908
- 1/3 of families were able to afford them
- 1910s- cars become cheaper and more common

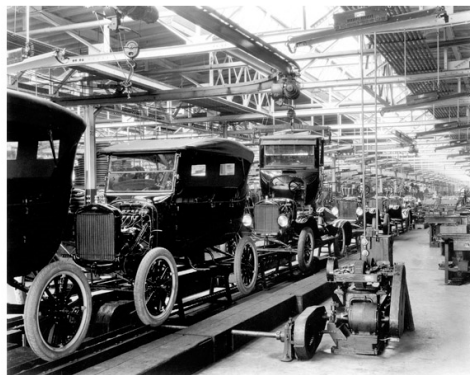
Assembly of Cars

- Cars used to be built by hand in separate stations
- Electricity allowed the creation of the assembly line



Assembly Line

- Cars, not people, moved
- Workers specialized in simple tasks
- More efficient → cheaper
- More people buy cheaper cars
- 4/5 of people could afford cars in 1920
- Ford Model T- most popular car



Question

- Can you come up with a list of all the companies and jobs that are needed because of cars? (Hint: what do cars need to run?)



Economic Boom

- Lots of cars → Lots of jobs
- Jobs → Money
- Money → Buying things
- Result- growing economy- an upward spiral

Your Task

- For this note:
 - Identify the most significant ideas discussed
 - Create a graphic representation of the main ideas discussed.
 - Brainstorm in a group, create graphic individually